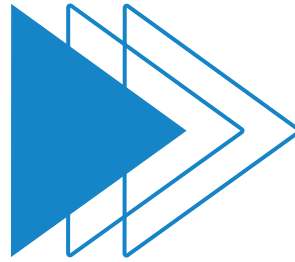




TIMMINS

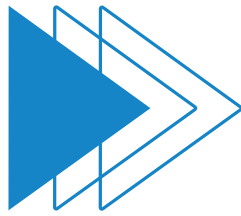
I'M IN. | J'Y TIENS. | ∇JU



How to Use Bike Lanes



Bike  **it!**
TIMMINS 



Designated bike lanes are separated from vehicle lanes by a solid white line and include markings showing they are for cyclists. Bike lanes can be used by bikes and e-bikes.



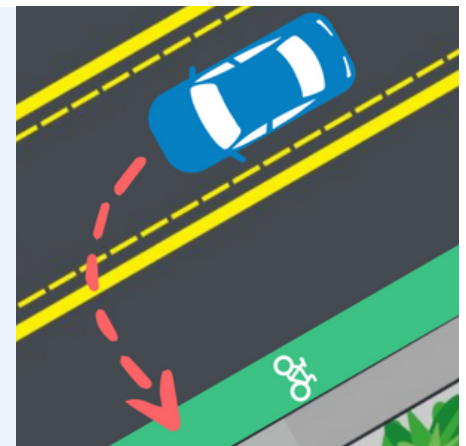
Motorists are not permitted to drive or park in a designated bike lane.



Cyclists ride in the same direction as traffic in the bike lane.

Bike lanes are designed to create a safe buffer between vehicles and cyclists. Motorists need to watch for cyclists using the bike lane in front, behind, or directly beside them before making any turn that requires crossing through the bike lane.

Vehicles turning across a bike lane must yield to a cyclist going straight ahead. Both motorists and cyclists are responsible for obeying traffic laws.



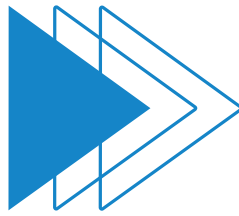
Bike lanes that are painted solid green indicate potential conflict areas, or areas where motorists and cyclists will be merging together.



Cyclists must watch for vehicles turning right and make eye contact with the driver to ensure they've seen you.



Cyclists should stay behind right-turning vehicles. Do not stop in a vehicle's blind spot.



LEFT



RIGHT



RIGHT



STOP

Cyclists should use hand signals to indicate when they are turning left, right, or stopping. Using hand signals can warn motorists of your intention and give them time to react properly. This is particularly important when you are leaving a designated bike lane to merge with traffic or to share a dedicated left-turn lane.



Cycling on city sidewalks is prohibited, except for children 11 and under. A parent or guardian may also ride on the sidewalk when accompanying a child 11 and under.



Active school travel, like biking to school, can help kids build road sense and learn about traffic and bicycle safety.

Ontario's one-metre rule still applies for motorists passing cyclists riding in a bike lane. Vehicles must maintain a distance of one-metre, where practical, between the vehicle and the bicycle.

Timmins' Cycling Committee is working to improve the city's active travel infrastructure.



#BikeitTimmins